

Reliable and Efficient Coldhead  
Replacement Solution

# GE COLDHEAD SERVICE KIT

COLDHEAD SERVICE KIT

*The GE Coldhead Change Kit is a complete and user-friendly solution for performing coldhead replacements on GE magnets. With advanced features and high-quality components, this kit ensures a smooth, safe, and efficient replacement process.*



## ► Comprehensive Kit Components:

The kit includes all necessary tools and accessories for a seamless coldhead replacement, such as:

- o Cables
- o Sensors
- o Gas connections
- o Additional accessories

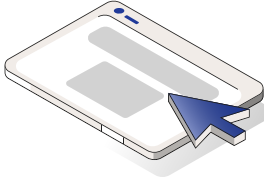
## ? Why Choose the GE Coldhead Change Kit?

This kit is designed to meet the demands of GE magnet servicing, offering:

- Enhanced safety and operational reliability.
- Simplified processes with user-friendly features.
- A complete solution with all essential components included.

# Key Features

1



## User-Friendly Interface

An intuitive design simplifies operations, making it accessible for all levels of expertise.

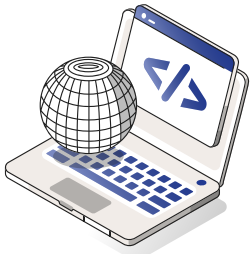
2



## Digital Display for Easy Monitoring

Allows users to easily follow and monitor critical parameters in real time.

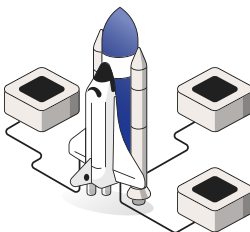
3



## Improved Software Safety Interlock:

Provides enhanced safety measures during the replacement process, ensuring reliable operation.

4



## High-Quality Vacuum Sensor and Pump

Ensures accurate measurements and dependable performance throughout the procedure.

# Kit Includes

## CASE 1

○ PART	QTY
● Heater Controller	1
● Sleeve Heater	1
● Sleeve Heater handle	1
● Gas Regulator with 8mm quick connect	1
● Heater Box	1
● Copper cleaning rod	1

# Kit Includes

## CASE 2

○ PART	QTY	○ PART	QTY
● Vacuum Pump	1	● Plexiglass Cover	1
● Blind NW16 vacuum port cap w/clamp	1	● 40cm copper pipe w/8mm quick connect	1
● Blind exhaust port cap	1	● Vacuum sensor cable	1
● Exhaust port cap	1	● SI410 sensor cable	1
● Oil level checked	1	● Comm Heater Cable	1
● Leather gloves	1	● 220VAC Power cable Short	1
● Spring load clamps	2	● 220VAC Power cable Short	1
● NW16 Clamp	3	● Vacuum pipe 30cm	1
● NW16 Centering Ring	3	● Vacuum pipe 5m	1
● Vacuum grease	1	● 8mm PVC pipe 5m	1
● 5mm Aluminium Tape	1	● 8mm PVC pipe 1m	1
● 10mm Aluminium Tape	1	● Manifold w/vacuum sensor	1
● Scissor	1	● Shim lead gas supply pipe	1
● Line wrench 26/32	1	● Hi-pressure pipe	1
● Line wrench 30/38	1	● HP to 8mm QC Converter	1
● Vacuum Seal Operator	1	● Heater Box Power Cable 5m	1